



ARPA: Ideas for Cities

GMA Annual Convention

August 9, 2021

Where are we?

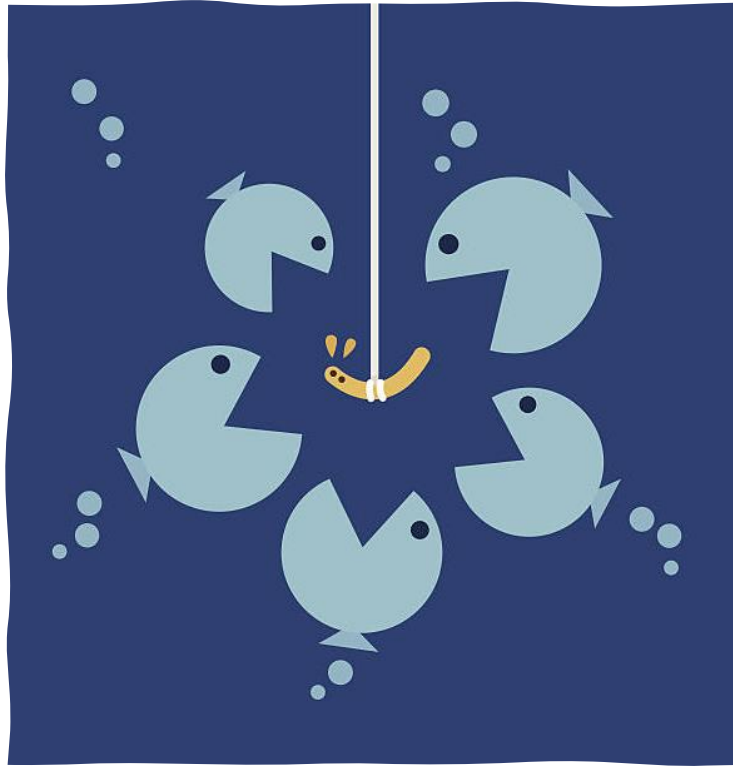
- \$1.4 billion in ARPA Local Fiscal Recovery Funds for Georgia's cities
- 23 Metro cities – funding direct from Treasury
- 515 NEU cities – funding direct from Treasury via OPB portal
- ARPA LFRF are now in the bank for most cities



Okay, now what?

**WHAT
NOW?**





Competing needs

What's the next step?





Things to keep in mind

- Treasury's [Interim Final Rules](#) are **NOT** final
- Treasury is continuing to update [FAQs](#)
- This is **NOT** CARES CRF – **no urgency to spend immediately**
- Deadline to incur costs = 12/31/2024
- Deadline to spend funds = 12/31/2026
- Treasury Compliance and Reporting [Guidance](#) is **NOT** final





Do's



Don'ts

Things to keep in mind

- Rush to spend funds without a plan
- Fail to read and understand all Treasury guidance, Award Terms and Conditions, the ARPA statute, the Interim Final Rule, and other requirements
- Make premature commitments
- Take risks that could require the city to pay back funds





Things to keep in mind

- Take your time – wait for final rules
- **Read** the IFR and FAQ
- Remember ARPA includes many “pots” of funding, not just LRF
- Rely on GMA and partner organizations for training, best management practices, sample policies, etc.
- Remember the city is responsible for spending and reporting on ARPA funds, not subrecipients
- Work with your county and community to assess needs
- Plan, plan, plan

Community Planning

- Be visionary, decide what will be meaningful
- Include stakeholders at the table
- Don't make commitments or finalize spending plans until you fully understand ARPA and guidelines are final
- Prepare to document spending
- Send GMA your city's ideas for how to use ARPA funds
- Learn from your peers



How can my city use ARPA SLRLF funds?

1. To respond to the public health emergency with respect to the Coronavirus Disease 2019 (COVID-19) or its negative economic impacts, including assistance to households, small businesses, and nonprofits, or aid to impacted industries such as tourism, travel, and hospitality.
2. Premium Pay for workers performing essential work during the COVID-19 public health emergency or through providing grants to eligible employers with essential workers.
3. For the provision of government services on revenue loss due to COVID-19 in most recent full fiscal year.
4. To make necessary investments in water, sewer, or broadband.



How can my city use ARPA SLRLF funds?

- Treasury Compliance and Reporting Guidance lists over 60 eligible uses: <https://home.treasury.gov/system/files/136/SLFRF-Compliance-and-Reporting-Guidance.pdf>



How can my city use ARPA SLRLF funds?

- Public Health
 - COVID-19 Vaccinations
 - COVID-19 Testing
 - COVID-19 Contact Tracing
 - Prevention in congregate settings (nursing homes, jails, schools)
 - PPE
 - Medical Expenses
 - Capital Investments or Physical Plant Changes to Public Facilities that respond to the COVID-19 Public health emergency
 - Other COVID-19 public health expenses (communications, enforcement, isolation/quarantine)
 - Payroll costs and benefits for public health, safety, and other public sector staff responding to COVID-19
 - Mental Health Services
 - Substance Use Services
 - Other Public Health Services



How can my city use ARPA SLRLF funds?

Negative Economic Impacts

- Household assistance: food programs
- Household assistance: rent, mortgage, and utility aid
- Household assistance: cash transfers
- Household Assistance: internet access programs
- Household Assistance: eviction prevention
- Unemployment benefits or cash assistance to unemployed workers
- Job training assistance
- Small business economic assistance
- Aid to non profit organizations
- Aid to tourism, travel, hospitality, other impacted industries
- Rehiring public sector staff



How can my city use ARPA SLRLF funds?

- Services to Disproportionately Impacted Communities (Services are eligible uses when provided in a Qualified Census Tract)
 - Education Assistance: early learning
 - Education Assistance: aid to high-poverty districts
 - Education Assistance: academic services
 - Education Assistance: social, emotional, and mental health services
 - Healthy childhood environments: childcare
 - Healthy childhood environments: home visiting
 - Healthy childhood environments: services to foster youth or families in child welfare system
 - Housing support (affordable housing, services for unhoused persons)
 - Improvements to neighborhoods
 - Social determinants of health (community health workers, lead remediation, community violence interventions)

How can my city use ARPA SLRLF funds?

- Premium Pay
 - Essential workers are those in critical infrastructure sectors who regularly perform in-person work, interact with others at work, or physically handle items handled by others
 - Additional pay of up to \$13 per hour
 - May be used to pay workers retroactively since the start of pandemic
 - Prioritize premium pay for lower income workers
 - Private sector grants to other employers

Investments in Water, Sewer & Broadband

Infrastructure

- Projects eligible under Clean Water State Revolving Fund ([CWSRF](#)) or Drinking Water State Revolving Fund ([DWSRF](#))
- Clean water (wastewater treatment, collection, conveyance, combined sewer overflows)
- Clean water: Stormwater
- Clean water: energy conservation, water conservation, nonpoint source
- Drinking water: treatment, transmission & distribution, lead remediation, source; storage
- Broadband: “last mile” and other projects
- Recipients may use SLFRF award funds to cover costs incurred for eligible projects planned or started prior to March 3, 2021, provided that the project costs covered by the SLFRF award funds were incurred after March 3, 2021.

How can my city use ARPA SLRLF funds?

- Reduce court backlogs by:
 - Implementing safety measures to facilitate court operations
 - Hiring additional court staff
 - Additional equipment or expenses to expedite cases
- Reduce and respond to increased violence due to pandemic:
 - Restoring public sector staff to pre-pandemic staffing levels
 - Community violence intervention programs
 - Additional enforcement efforts to reduce gun violence
 - Overtime costs directly related to combatting increased violence
 - Investing in technology and equipment to efficiently and affectively respond to gun violence



How can my city use ARPA SLRLF funds?

- ✓ Parks and recreation
- ✓ Public safety equipment
- ✓ Grant administration
- ✓ Assist private residents with home repairs
- ✓ Food banks
- ✓ Technology improvements
- ✓ Cyber security
- ✓ Partnership with non-profit agency to administer programs
- [GMA List of Project Ideas](#)
- NLC Project Ideas [NLC Local Action Tracker - Ideas from Cities Across the US by State](#)

Project Ideas....

- Clean-up of wastewater holding ponds

- Community development (i.e., housing rehabilitation, loan forgiveness, transitional housing, and other programs for underserved areas of the community)

- Mental health training for first responders and creation of a crisis intervention system

- Private/public partnership with internet service provider, county, school system, and healthcare for comprehensive broadband connectivity

- Replacement of asbestos and lead water distribution lines

- Replacement of utility meter system with AMI system for consumption management and cost control

- Replacement of water meters and handheld readers

- Replacement of water pumps at water treatment facility

- Revenue replacement (incl. for projects related to parks, sidewalks, etc.)

- Sewer facility upgrades

- Solid waste disposal related to PPE

- Utility (water and sewer) billing software

Other Sources for Project Ideas

- [NLC Local Action Tracker - Ideas from Cities Across the US by State](#)
- American Institute of Architects: [Reopening America: Strategies for Safer Buildings](#)
- American Society of Heating, Refrigerating and Air-Conditioning Engineers: [Resources to Address COVID-19](#)
- Better Block Foundation: [Covid-19 Guides](#)
- Citizens' Institute on Rural Design: [Community Resources](#)
- FEMA: [Local Government Solutions Guide for COVID-19 and Beyond: Adaptive Design](#)
- Knight Foundation: [Adaptive Public Space: Places for People in the Pandemic and Beyond](#)
- NACTO: [Streets for Pandemic Response & Recovery](#)
- Neighborhood Design Center: [The Design for Distancing Ideas Guidebook](#)
- Strong Towns: [The Local Leader's Toolkit: A Strong Towns Response to the Pandemic](#)

How can other ARPA funds be used to address my community's needs?

- ✓ IRS Child tax credits: [ChildTaxCredit.gov](https://www.irs.gov/credits-deductions/understanding-child-tax-credits)
- ✓ DCA Rental/ utility assistance: [Georgia RAP](#)
- ✓ DCA Mortgage Assistance
- ✓ [Food Access and Jobs](#) (NLC)
- ✓ Early childhood: [support for vulnerable children and families](#)

How can other ARPA funds be used to address my community's needs?

FEMA

- **Disaster Relief Fund:** \$50 billion
- **Funeral Assistance:** Use of DRF funds authorized for funeral assistance.
- **Emergency Food and Shelter Program:** \$400 million
- **Humanitarian Relief:** \$110 million
- **Assistance to Firefighter Grants:** \$100 million
- **SAFER Grants:** \$200 million
- **Emergency Management Performance Grants:** \$100 million

Karyn D. Swoopes

External Affairs Specialist | External Affairs | FEMA Region 4

Office: (770) 220-8764 | Mobile: (202) 716-4136

karyn.swoopes@fema.dhs.gov

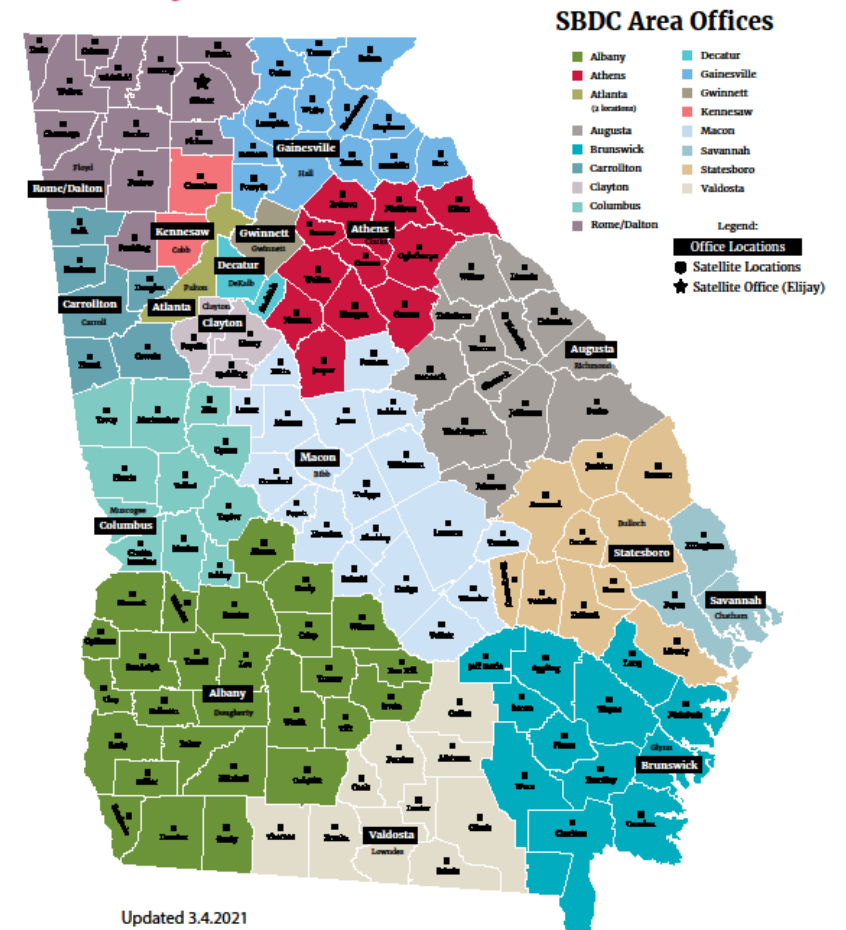
Georgia SBDC: Help for Small Businesses



Small Business Development Center
UNIVERSITY OF GEORGIA

First Stop: UGA Small Business Development Center ([SBDC](#))

- Expert staff in all 18 offices
- Personalized assistance
- No cost to business owners for one-on-one assistance
- Minimal cost for most training programs
- SBDC staff available to meet with city council/ staff/ development authority to discuss local business needs





Georgia SBDC: Help for Small Businesses

- Technical assistance
- Marketing data
- Digital marketing resources
- Training (in-person, webinars)
- Local lenders (bank and non-bank)
- Workforce
- Vendors
- Finding new customers
- Public and private assistance
- Relief programs

Georgia SBDC: Help for Small Businesses

- <https://www.georgiasbdc.org/state-office/>
- 706-542-2762
- Headquarters in Athens
- UGA operated
- All 18 offices have access to experts and services organization-wide
- Staff has access to national and state resources



**Small Business
Development Center**
UNIVERSITY OF GEORGIA

Department of Commerce: EDA

EDA NEWSROOM

Newsroom
Blogs
Press Releases
Speeches/Remarks
Newsletters
Media

Resource Directory

Disaster Recovery

Annual Reports

Stay Connected

(Subscribe to EDA's monthly e-newsletter)

PRESS RELEASE

U.S. SECRETARY OF COMMERCE GINA RAIMONDO ANNOUNCES \$3 BILLION INVESTMENT IN AMERICA'S COMMUNITIES

Historic investment from President Biden's American Rescue Plan represents the largest economic development initiative in decades

Communities across the country will be able to apply for funding immediately

***Contact: EDA Public Affairs Department, (202) 482-4085
July 22, 2021***



WASHINGTON – Today, U.S. Secretary of Commerce Gina M. Raimondo announced that the Department of Commerce's Economic Development Administration (EDA) will implement a series of programs, collectively called Investing in America's Communities, to equitably invest the \$3 billion it received from President Biden's American Rescue Plan Act to help communities across the country build back better. The EDA investment is the largest economic development initiative from the Department of Commerce in decades.

Later today, Secretary Raimondo will address the White House Briefing Room to further lay out the Biden Administration's vision for how this historic investment will help every community not only rebuild their local economy but also reimagine it for the future.

"President Biden's American Rescue Plan delivered direct relief to the American people and was the first step to energizing the American economy following the devastating impacts of the coronavirus pandemic," said Secretary Raimondo. "Now, its medium-term investments will allow communities around the country not only rebuild but reimagine their economy for the future."

"With an emphasis on equity, EDA's investments made possible by the American Rescue Plan will directly benefit communities that have been denied full access to economic prosperity and who have been disproportionately impacted by the coronavirus pandemic," Secretary Raimondo continued. "We will work with local communities across the country on innovative new approaches to ensure that we can increase American competitiveness by strengthening our workforce, businesses, and communities and build back better in regions across the country."

Investing in America's Communities, was launched today with six Notices of Funding Opportunity:

- **Build Back Better Regional Challenge** (\$1 billion)



A bureau within
the U.S. Department
of Commerce

About

Funding Opportunities

Programs

Success Stories

Resources

Newsroom

Contact

Search

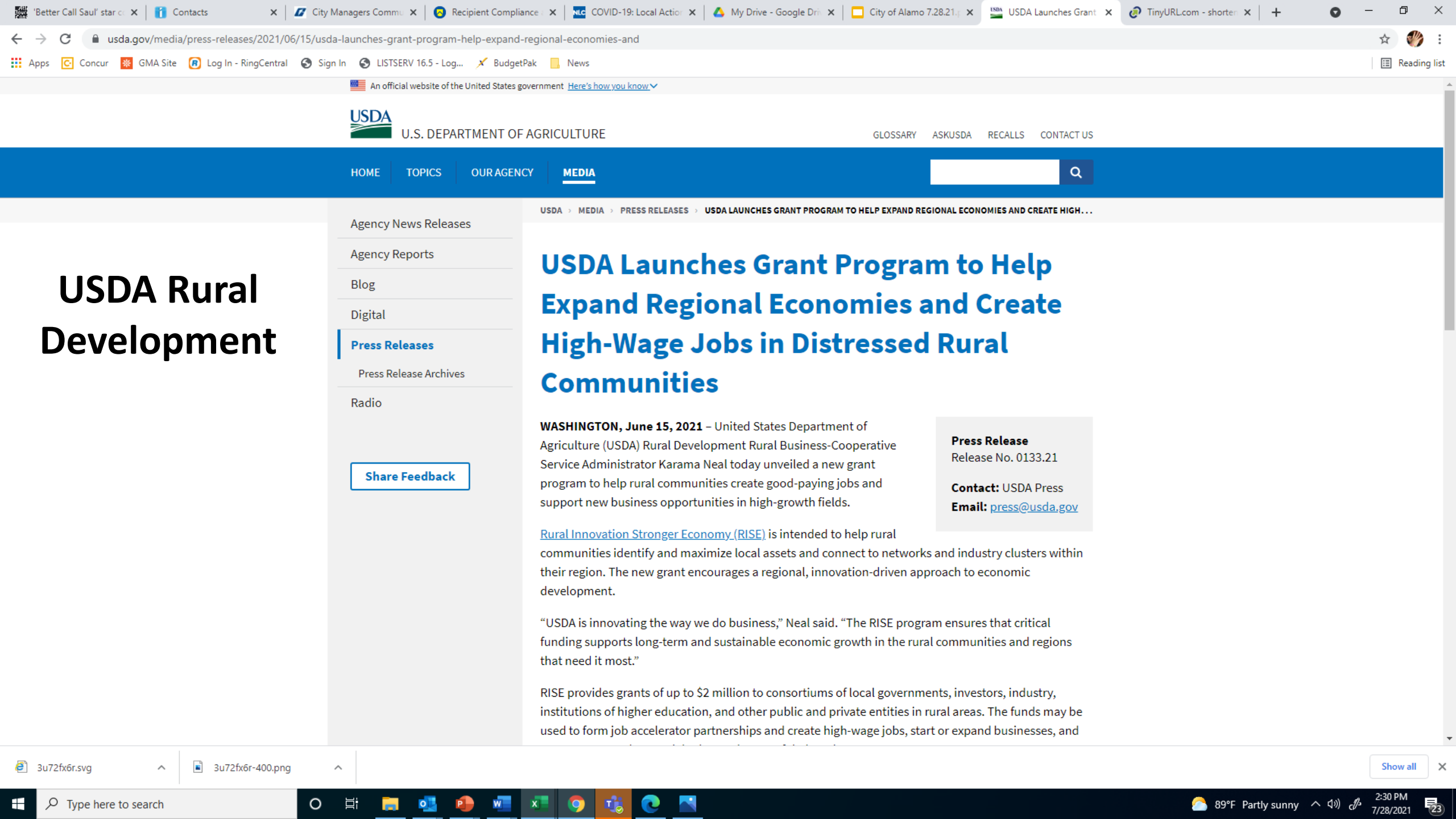


HOME / NEWSROOM / LATEST PRESS RELEASES / U.S. Secretary of Commerce Gina Raimondo Announces \$3 Billion Investment in America's Communities

Show all

EDA – ARPA Investing in America's Communities

- Investing in America's Communities includes:
- **Build Back Better Regional Challenge (\$1 billion)** will capitalize on American ingenuity and American workers by providing a transformational investment to regions across the country to revitalize their economies.
- **Good Jobs Challenge (\$500 million)** is designed to help get Americans back in good-paying jobs. The program will develop and strengthen regional workforce training systems and sector-based partnerships with a focus on programs targeted at women, people of color and historically underserved communities.
- **Economic Adjustment Assistance (\$500 million)** grants will help hundreds of communities across the nation plan, build, innovate, and put people back to work through projects tailored to meet local needs.
- **Indigenous Communities (\$100 million)** program will work hand-in-hand with Tribal Governments and Indigenous communities to develop and execute economic development projects they need to recover from the pandemic and build economies for the future.
- **Travel, Tourism and Outdoor Recreation (\$750 million)** program will focus on revitalizing the hard-hit travel, tourism, and outdoor recreation industries and accelerate the recovery of communities that rely on these sectors.
- **Statewide Planning, Research and Networks (\$90 million)** grants include funding for state planning efforts as well as grants to build Communities of Practice to extend technical assistance to support EDA's work with grantees.
- As part of the six programs, EDA is making a **Coal Communities Commitment**, allocating \$300 million to ensure support for these communities as they recover from the pandemic and create new jobs and opportunities, including through the creation or expansion of a new industry sector.
- To learn more about EDA and our American Rescue Plan Funding Opportunities sign up for our webinar, EDA 101 and America Rescue Plan Overview, which will be held on **July 27** and **July 29**.
- For more information, **visit www.eda.gov/ARPA** for the latest news on EDA's implementation plans.



USDA Rural Development



U.S. DEPARTMENT OF AGRICULTURE

GLOSSARY ASKUSDA RECALLS CONTACT US

HOME TOPICS OUR AGENCY **MEDIA**



USDA > MEDIA > PRESS RELEASES > USDA LAUNCHES GRANT PROGRAM TO HELP EXPAND REGIONAL ECONOMIES AND CREATE HIGH...

USDA Launches Grant Program to Help Expand Regional Economies and Create High-Wage Jobs in Distressed Rural Communities

WASHINGTON, June 15, 2021 – United States Department of Agriculture (USDA) Rural Development Rural Business-Cooperative Service Administrator Karama Neal today unveiled a new grant program to help rural communities create good-paying jobs and support new business opportunities in high-growth fields.

[Rural Innovation Stronger Economy \(RISE\)](#) is intended to help rural communities identify and maximize local assets and connect to networks and industry clusters within their region. The new grant encourages a regional, innovation-driven approach to economic development.

“USDA is innovating the way we do business,” Neal said. “The RISE program ensures that critical funding supports long-term and sustainable economic growth in the rural communities and regions that need it most.”

RISE provides grants of up to \$2 million to consortiums of local governments, investors, industry, institutions of higher education, and other public and private entities in rural areas. The funds may be used to form job accelerator partnerships and create high-wage jobs, start or expand businesses, and

Press Release
Release No. 0133.21

Contact: USDA Press
Email: press@usda.gov

Agency News Releases

Agency Reports

Blog

Digital

Press Releases

Press Release Archives

Radio

[Share Feedback](#)

[Show all](#)

Type here to search

89°F Partly sunny 2:30 PM 7/28/2021

USDA – Rural Innovation Stronger Economy (RISE)

How may funds be used?

- Grant amounts are awarded competitively with a minimum of \$500,000 and a maximum grant amount of \$2,000,000.
- RISE grant funds can be used to:
- Build or support a business incubator facility
- Provide worker training to assist in the creation of new jobs
- Train the existing workforce with skills for higher-paying jobs
- Develop a base of skilled workers and improve their opportunities to obtain high-wage jobs in new or existing local industries
- For more information, <https://www.rd.usda.gov/programs-services/business-programs/rural-innovation-stronger-economy-rise-grants>.



- ▼ About OPB
- ▼ Budget Information
- ▼ COVID Response
- ▼ Census Data
- ▼ Planning and Evaluation
- ▼ State Policies
- ▼ Apps and Resources

State Fiscal Recovery Fund Application Information

Applying for State Fiscal Recovery Funds

The application period for the State Fiscal Recovery Funds will be August 1-August 31, 2021.

Applicant will be required to register in the Georgia Grants portal to submit an application. The portal registration will begin August 1st, 2021.

In addition to general applicant information, you will need:

- **DUNS Number**
- **EIN Number**
- **SAMs Number** (while this is not required to submit an application, it will be required to receive your award. This process could take some time, so OPB strongly encourages

Applicant Eligibility

Government Organizations:

- State Agencies
- County governments
- City or township governments
- Special district governments

Georgia Professional Associations and Organizations:

- Industry Trade Associations

Georgia's State Fiscal Recovery Funds

Georgia Jobs and Infrastructure Committees

- Governor Brian Kemp has named members of the [Georgia Jobs and Infrastructure Committees](#), which will be responsible for receiving applications and making recommendations to the Governor regarding federal coronavirus relief funds allocated to Georgia through the American Rescue Plan. State government entities, units of local government, industries, and nonprofits will be eligible to apply.
- Updates regarding the application process and eligibility will be posted on OPB's website at <https://opb.georgia.gov/state-fiscal-recovery-fund>.
- **The application period for the State Fiscal Recovery Funds is August 1-August 31, 2021.**

Reporting Requirements

- Treasury SLFRF Reporting Guidance addresses priority areas for an equitable economic recovery.
- Treasury will begin to accept recipients' reports through the Treasury Submission Portal and will issue a User Guide and other reference materials before reporting deadlines.
- Metro cities will provide an interim report by **August 31, 2021** with expenditures by category.
- Metro cities will provide a project and expenditure report by October 31, 2021 and then 30 days after the end of each quarter thereafter.
- Metro cities over 250,000 will provide an annual performance report.

NEU Reporting Requirements

- Each NEU will also be asked to provide the following information with their first report submitted by **October 31, 2021**:
- Copy of the signed award terms and conditions agreement (which was signed and submitted to the State as part of the request for funding)
- Copy of the signed assurances of compliance with Title VI of the Civil Rights Act of 1964 (which was signed and submitted to the State as part of the request for funding)
- Copy of actual budget documents validating the top-line budget total provided to the State as part of the request for funding

REPORTING GUIDANCE

Uniform Administrative Requirement

- Generally subject to Uniform Administrative Requirements, Cost Principles, and Audit Requirements (Uniform Guidance)
- Implement robust internal controls and effective monitoring to ensure compliance

Administrative Costs

- Supporting effective management and oversight
- Ensuring compliance with legal, regulatory, and other requirements
- Including cost of consultants

Cash Management

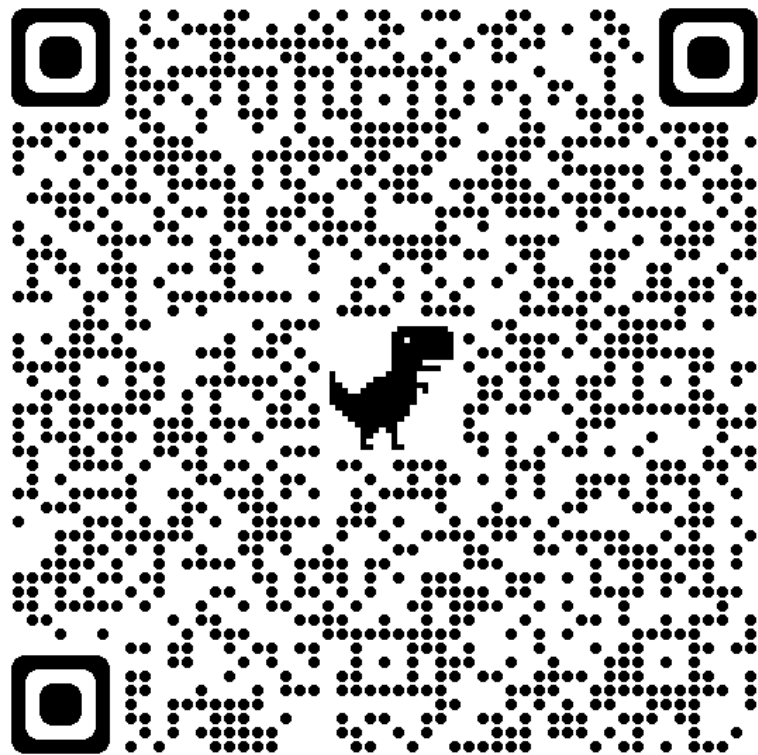
- SLFRF can be placed in interest-bearing accounts
- Interest does not need remitted to Treasury
- Interest is not subject to SLFRF eligible uses

ARPA Reporting Resources and Updates

- Check [Treasury website](#) for links to webinars with details on reporting requirements
- [NLC Webinar June 24](#) on Treasury Reporting Requirements (with slides)
- CVIOG ARPA [Webinars](#)

What's Next? Infrastructure!

- Congress is working on bipartisan infrastructure legislation
- Bipartisan Infrastructure Framework
- \$579 billion in new spending; \$1.2 trillion over 8 years for transportation, clean water, broadband, clean power, infrastructure financing authority
- GMA has worked with Congress and White House to ask for infrastructure funds for Georgia's cities



Questions?



Becky Taylor



404-402-6110



btaylor@gacities.com