



GMA Cities Connect

The Unique Advantage of Multi-Level Collaboration

March 22, 2022

The image shows two tall, cylindrical metal grain silos with rusted, corrugated surfaces. They are situated in a field of dry, golden-brown grass. In the background, there are bare trees and a clear blue sky. The silos have ladders attached to their sides, and a person is visible near the top of the taller silo.

Georgia Before 1990

**Public and private
sectors were busy
working. But not
together.**

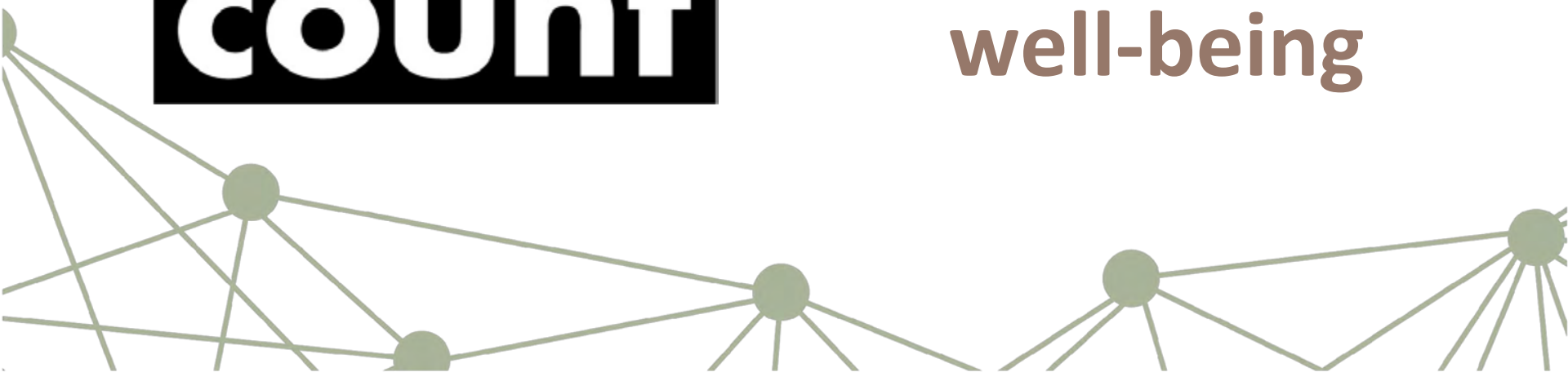


In 1990
Georgia Ranked
48th
in the nation
in child
well-being





In 2021
Georgia Ranked
38th
in the nation
in child
well-being



Georgia Family Connection's Unique Vantage Point

We see the **big picture**,
while operating effectively
at the **local level**.

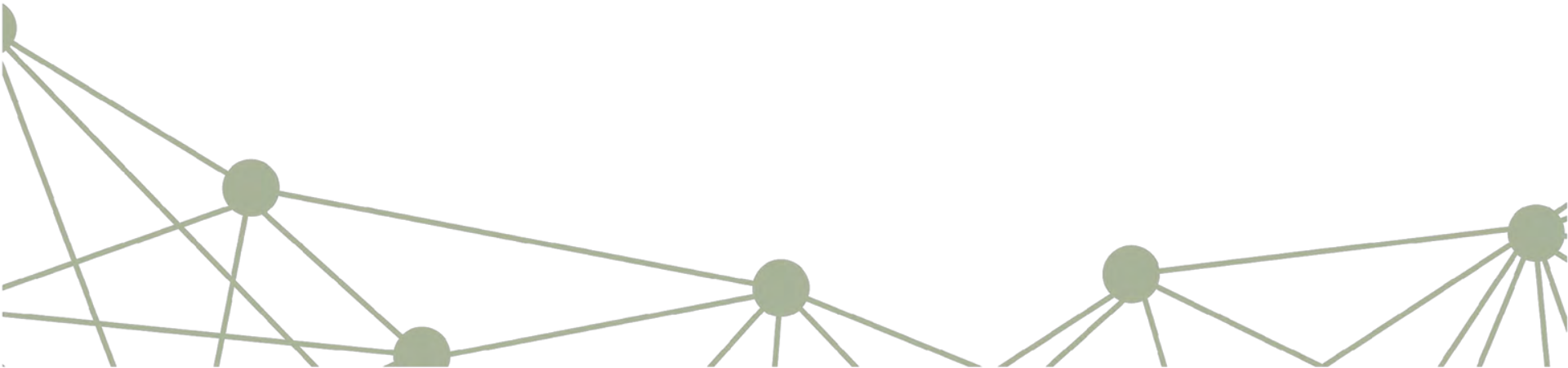


Indicators of Community Well-Being and Best Practices for Addressing Them



Low Birthweight

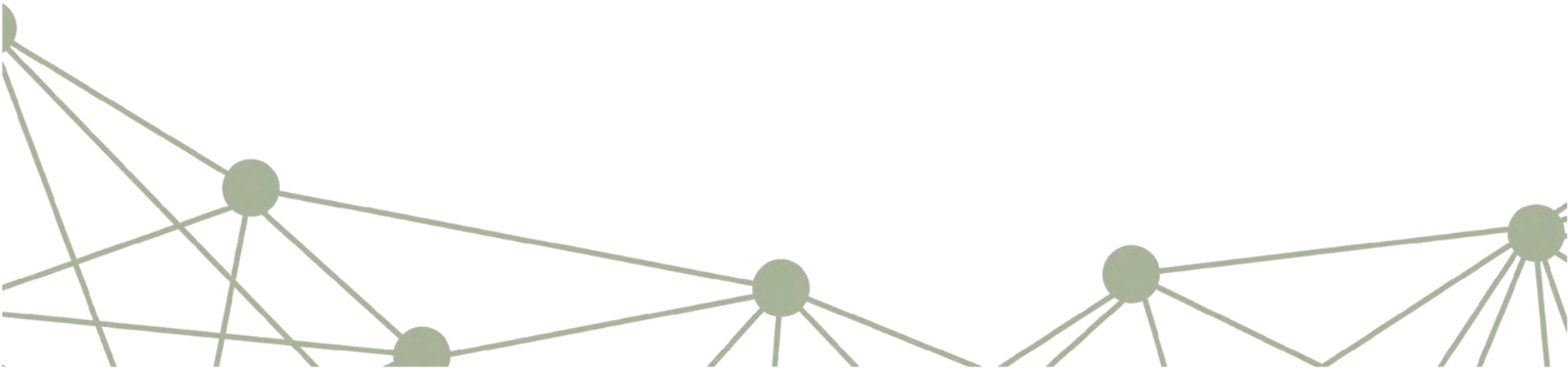
\$500,000,000



Low Birthweight

United States: **8.3%** of babies

Georgia: **10%** of babies



Low Birthweight Strategies

- Targeted **home visitation**
- **Health education** regarding risk factors
- **Nutritional education** for women of child-bearing age
- **Sharing** all available **resources**

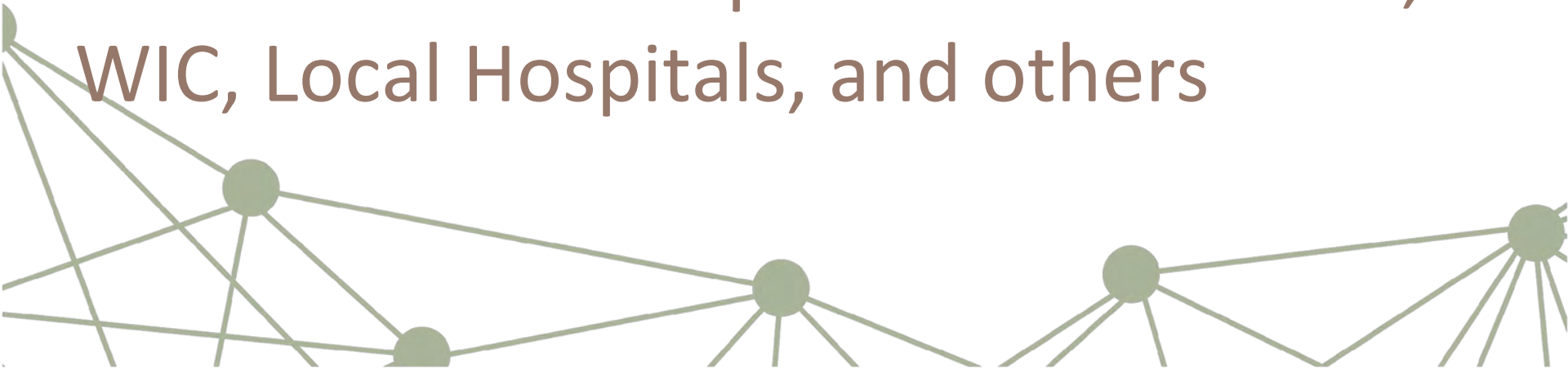


LBW Prevention Cohort

Participating Counties: Butts, Heard, Lamar, Meriwether, Spalding

State Partner: Kaiser Permanente

Local Partners: Dept. of Public Health, WIC, Local Hospitals, and others



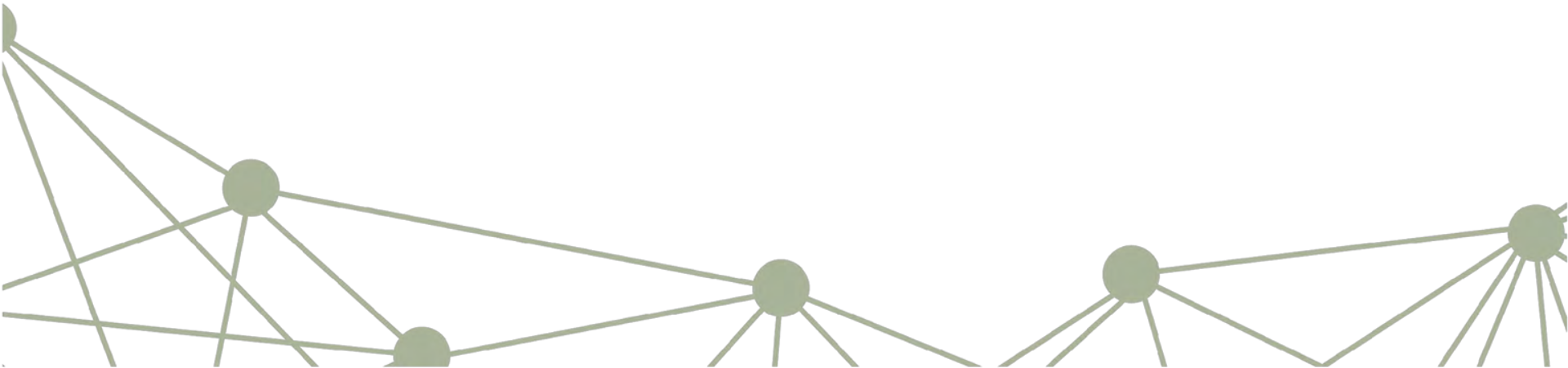


Child Abuse and Neglect

Child Abuse and Neglect

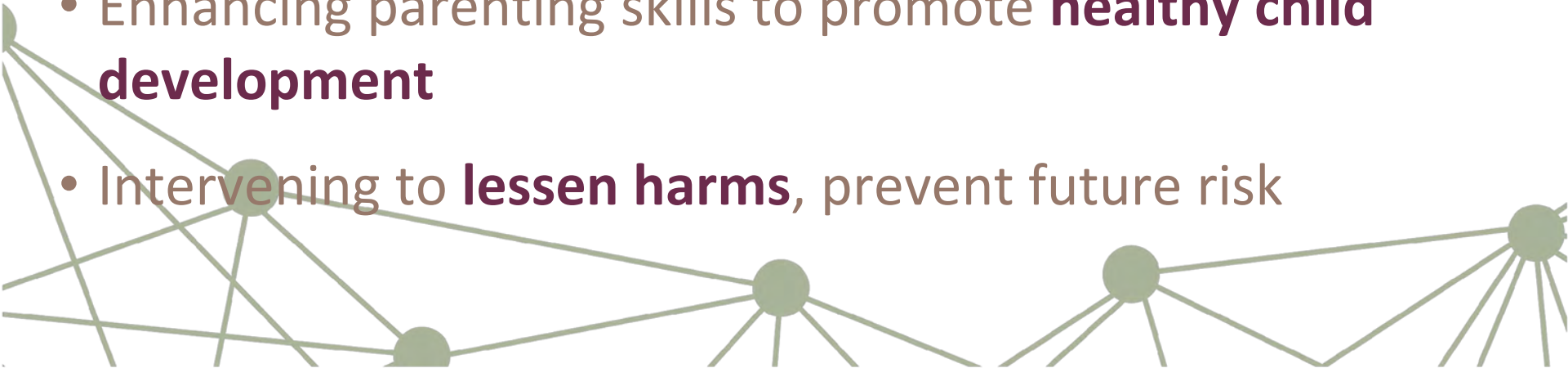
United States: 8.9 per 1,000

Georgia: 3.9 per 1,000



Strategies to Prevent Child Abuse and Neglect

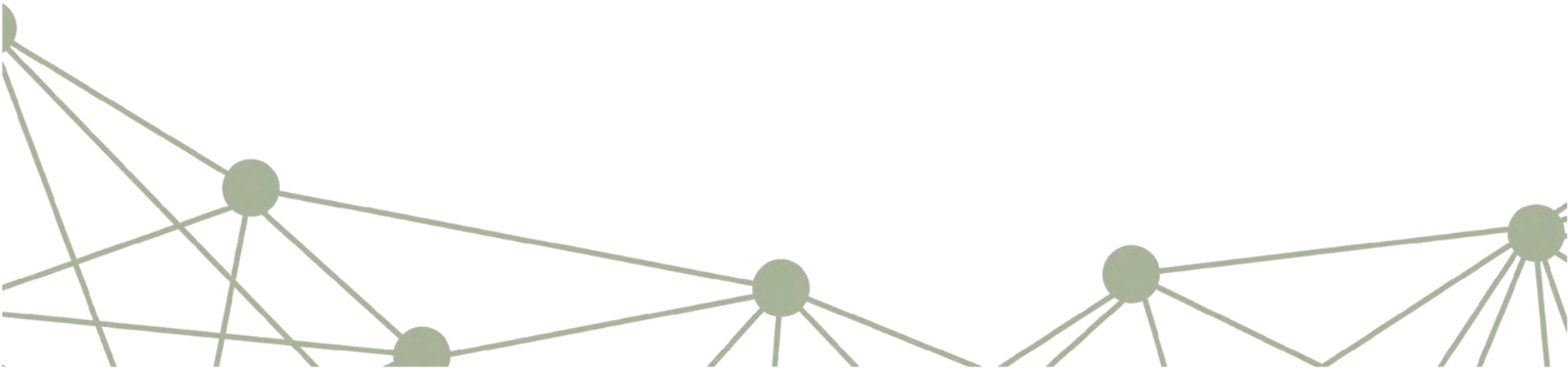
- Strengthening **economic supports** to families
- Changing social norms to **support parents** and **positive parenting**
- Providing **quality care and education** early in life
- Enhancing parenting skills to promote **healthy child development**
- Intervening to **lessen harms**, prevent future risk



Family Support Cohort

Participating Counties: Dade, Dougherty, Floyd, Lanier, Lumpkin, Webster

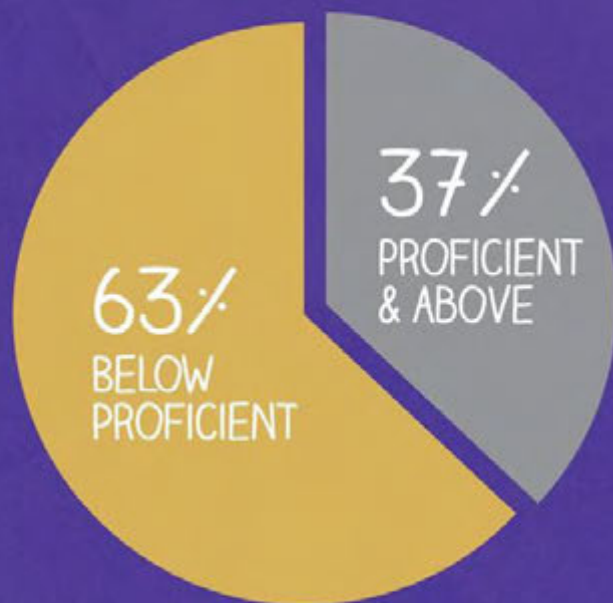
State Partner: DFCS, Prevention and Community Support Section



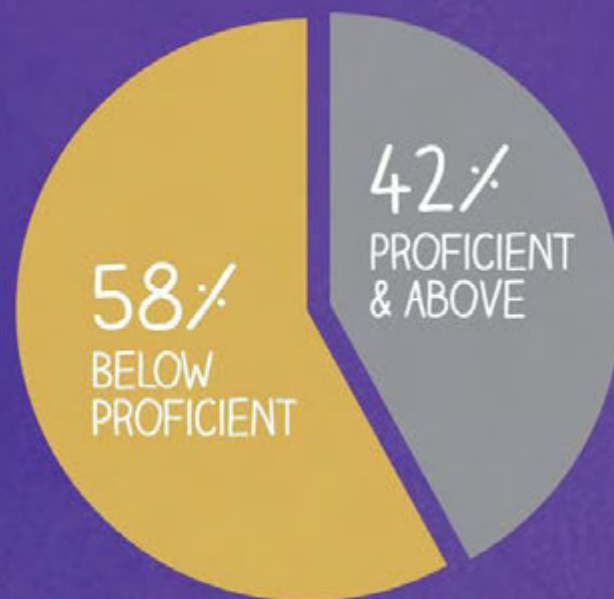


Grade-Level Reading

3RD GRADE LITERACY IN GEORGIA



2015



2019



GET GEORGIA READING

CAMPAIGN FOR GRADE LEVEL READING



LANGUAGE NUTRITION

All children experience abundant, positive, language-rich social interactions with caregivers, educators, and peers.



ACCESS

All children and their families have access to, and support for, healthy development and success from birth through high school.



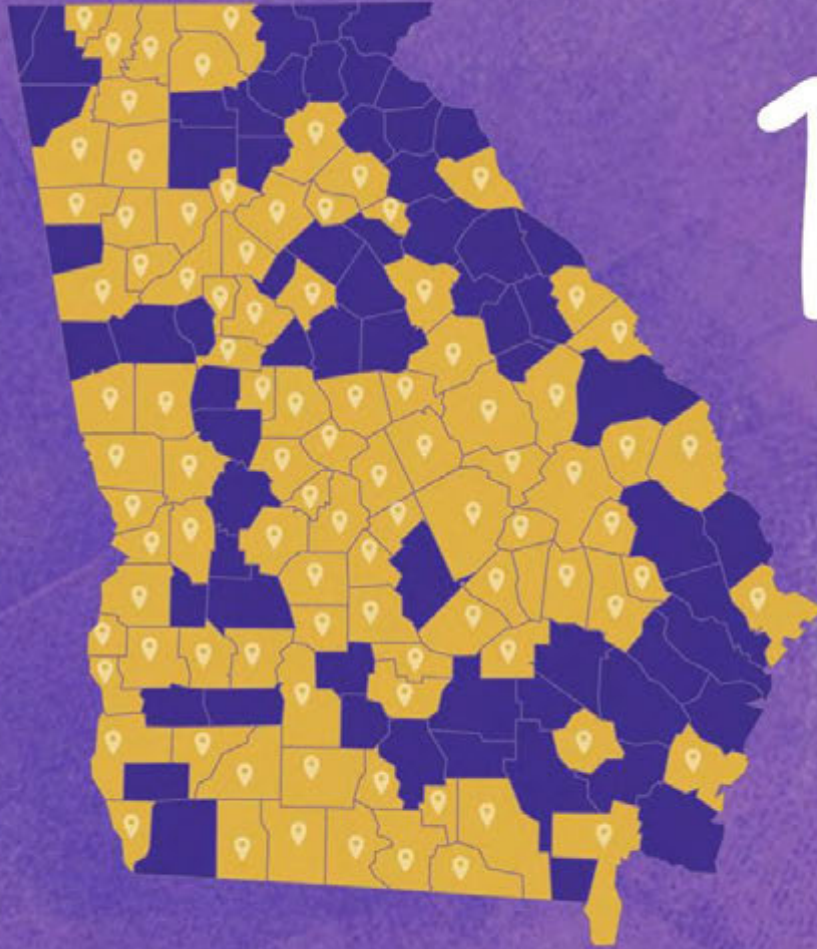
POSITIVE LEARNING CLIMATE

All educators, families, and policymakers understand and address the impact of learning climate on social-emotional development, attendance, engagement, and, ultimately, student success.



TEACHER PREPARATION & EFFECTIVENESS

All teachers are equipped with evidence-informed knowledge and skills to effectively meet the learning needs of each child in a developmentally responsive manner.



116

Communities
across
Georgia



GEORGIA PARTNERSHIP
FOR EXCELLENCE IN EDUCATION



UNIVERSITY SYSTEM
OF GEORGIA



Council of Juvenile Court
Judges of Georgia

Georgia Grantmakers
ALLIANCE

in partnership with the
Southeastern Council
of Foundations



THE ANNIE E. CASEY FOUNDATION





High School Completion

High School Students Not Graduating on Time

United States: **14%**

Georgia: **18%**



Promising Practices to Increase High School Completion

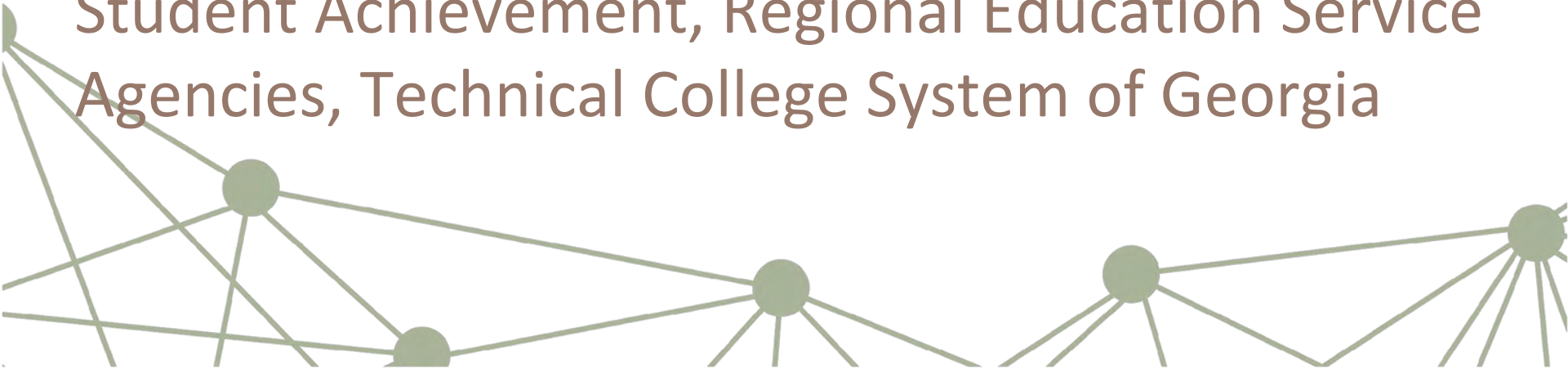
- Using **early warning signs** with appropriate **interventions**
- **Early college** high school model
- **Career Academies**
- **Small schools** of choice
- **Vocational-oriented** and **supplemental academic** training programs



Supporting Youth Cohort

Participating Counties: Ben Hill, Crawford, DeKalb, Jenkins, Macon, Mitchell, Quitman, Treutlen, Wilkes, and Worth

Partners: Communities in Schools of Georgia, Georgia Dept. of Education, Georgia Office of Student Achievement, Regional Education Service Agencies, Technical College System of Georgia





Civic Health

What is Civic Health?

How we engage:

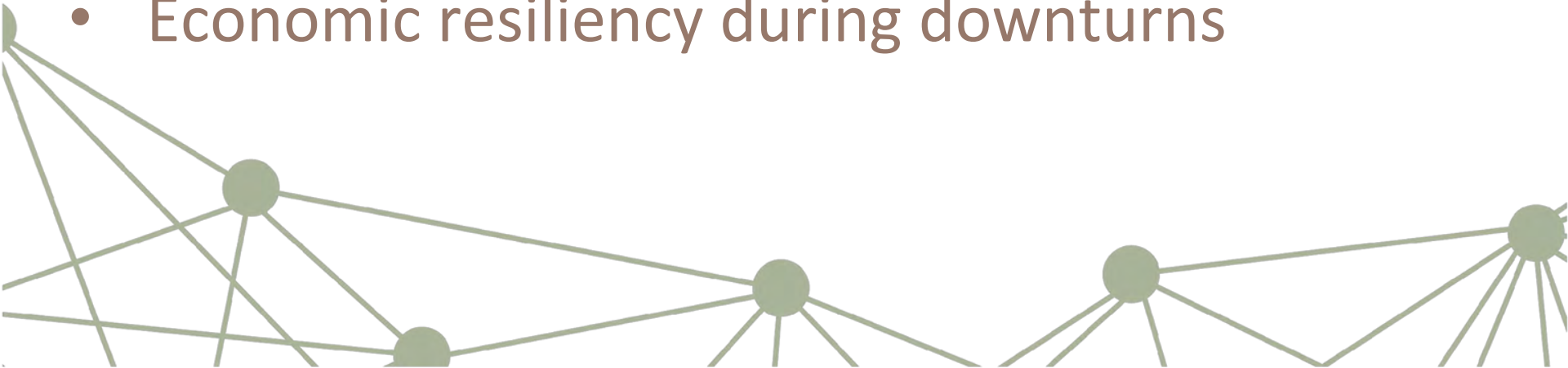
- with **one another**
- with **our communities**
- with **institutions**
- in **politics**



Why Civic Health?

Communities with better civic health have:

- Lower crime rates
- Better public health outcomes
- Stronger workforce development
- Economic resiliency during downturns



Civic Health Indicators

Georgia ranks:

- **47th** in the nation in donating to charitable or religious organizations
- **49th** in the nation for contacting or visiting a public official
- **13th** in the nation in frequently posting views about political, societal, or local issues on the internet



Civic Health Work in Georgia

- *Georgia Civic Health Index* (2013, 2019)
- **Local data collection** (Camden, Fayette, Macon-Bibb, Stephens, Washington)
- **iCivics partnership and trainings**
- **Youth Engagement Survey project in partnership with GMA** (6 communities to date)



Race, Equity, and Inclusion



At the heart of
public service is
improving the
quality of life for all
Georgians.



REI Work

GaFCP has been infusing a **Race, Equity, and Inclusion** framework into our work since 2016

Equity Facilitation Team: staff members trained to lead conversations about REI in communities

Entire Family Connection network has received an **introduction to REI training**, with 90% requesting additional training



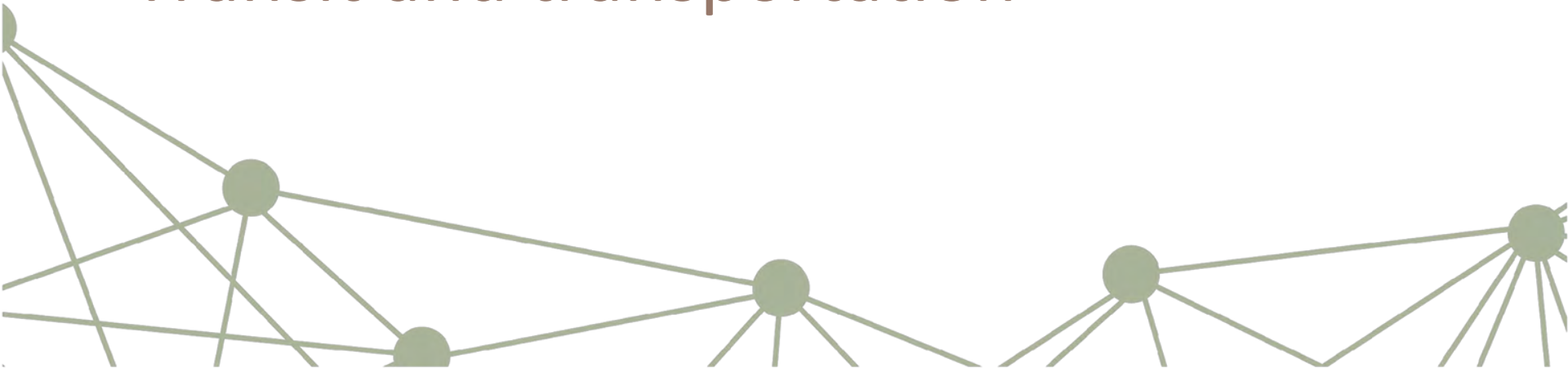
Approaches

- Race, equity, and inclusion
- Placemaking, infrastructure, and access
- Quality education
- Partnership and coalition building



Considerations

- Constituent engagement
- Engaging and aligning unusual partners
- Rethinking systems and policies
- Workforce training
- Healthcare and addiction services
- Transit and transportation



**WE ENVISION A GEORGIA WHERE
ALL CHILDREN ARE HEALTHY,
PRIMED FOR SCHOOL,
AND SUCCEED WHEN THEY GET THERE;
AND WHERE STRONG FAMILIES
CONTRIBUTE TO VIBRANT, ROBUST
COMMUNITIES THAT THRIVE**

Let's Talk.